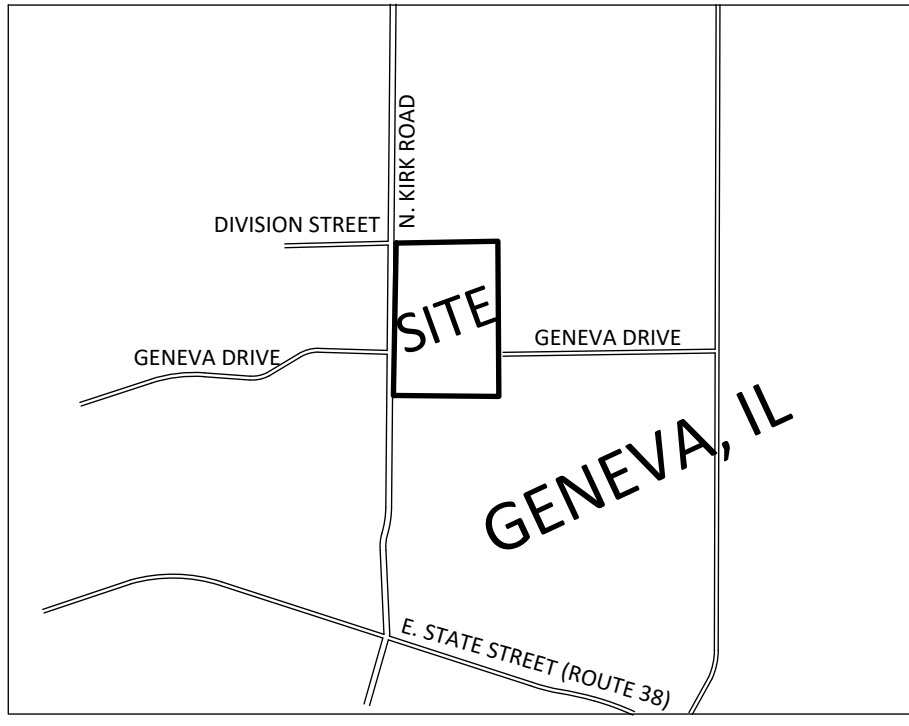


PRELIMINARY/FINAL PLAT OF SUBDIVISION GENEVA FARMS NORTH

BEING A SUBDIVISION OF PART OF THE NORTH FRACTIONAL HALF OF SECTION 1,
TOWNSHIP 39 NORTH, RANGE 8 EAST OF THE THIRD PRINCIPAL MERIDIAN

VICINITY MAP (NOT TO SCALE)



AREA TABLE

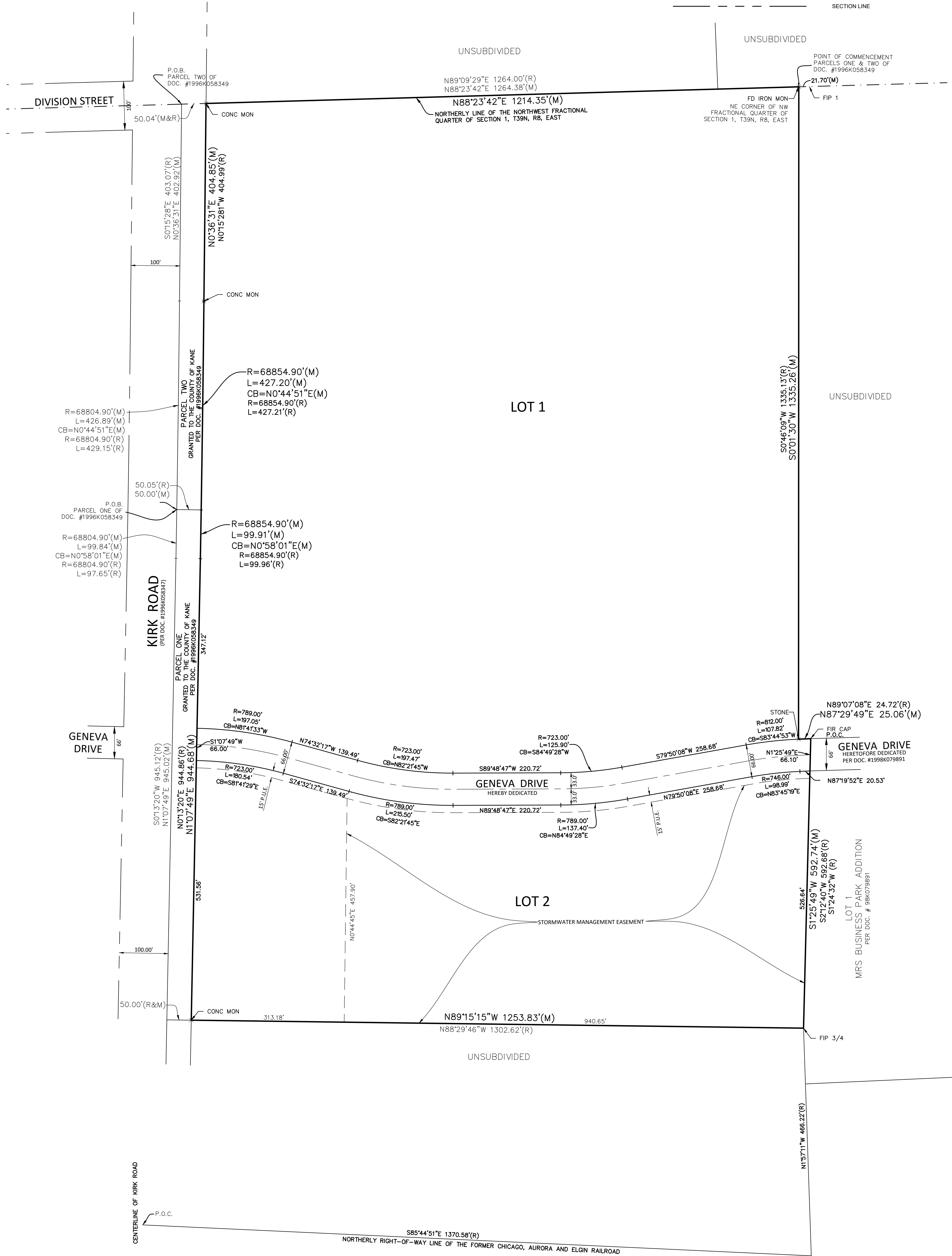
LOT 1:	1,655,887 SQ.FT.	38.014 ACRES±
LOT 2:	602,865 SQ.FT.	13.814 ACRES±
RIGHT-OF-WAY DEDICATIONS:	83,952 SQ.FT.	1.927 ACRES±
TOTAL:	2,342,704 SQ.FT.	53.781 ACRES±

LEGEND

○ FIP	FOUND IRON PIPE
○ SIP	SET IRON PIPE
● FIR	FOUND IRON ROD
P.U.E.	PUBLIC UTILITY EASEMENT
P.O.B.	POINT OF BEGINNING
P.O.C.	POINT OF COMMENCEMENT
(M)	MEASURED DIMENSION
(R)	RECORD DIMENSION
---	BOUNDARY
---	EXISTING LOTS
---	RIGHT-OF-WAY
---	CENTERLINE
---	EASEMENT
---	SECTION LINE

SCALE: 1" = 100'

MEASURED BEARINGS SHOWN HEREON ARE REFERENCED TO STATE PLANE COORDINATE SYSTEM ILLINOIS EAST, NORTH AMERICAN DATUM OF 1983 BASED ON GLOBAL NAVIGATION SATELLITE SYSTEM OBSERVATIONS



SHEET 1 OF 2	DATE	6/18/2021
	FILE	4312-221
	CAD FILE	GENEVA FARMS NORTH PLAT OF SUBDIVISION
	SCALE	AS SHOWN

Weaver Consultants Group
www.wcgrp.com

No.	DATE	REVISION DESCRIPTION
1	6/23/2021	REVISED ROW & LOT GEOMETRY

PRELIMINARY/FINAL PLAT OF SUBDIVISION
GENEVA FARMS NORTH
KIRK ROAD AND GENEVA DRIVE
GENEVA, ILLINOIS

PREPARED FOR:
ARCO MURRAY
| DESIGN BUILD

